



Oleander Crescent

Cherry Lodge, Northampton

oriordanbond
SALES & LETTINGS



Oleander Crescent

Cherry Lodge
NN3 8QP

OFFERS OVER £240,000

A modern three bedroom terraced property, situated in the popular location of Cherry Lodge, within walking distance to local shops and schooling. This home has been thoughtfully renovated by the current owners.

Accommodation comprises entrance hall, open plan living accommodation with newly fitted kitchen, part converted garage currently used as a family room/home office, three good size first floor bedrooms and a newly fitted bathroom. Externally to the front is a block paved driveway providing off road parking with access to the garage store. To the rear is a fully landscaped garden with pergola and brick-built pizza oven, perfect of entertaining. Further benefits include uPVC double glazing and gas radiator heating. (B/845/S)

Additional information

- Council Tax Band: B
- Energy Efficiency Rating: C

Viewing

Viewing strictly by appointment – details below

Disclaimer

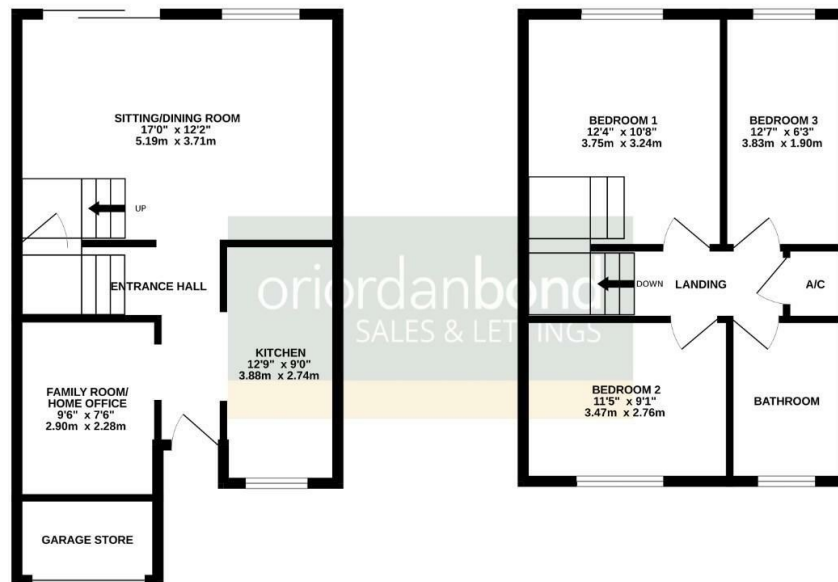
O'Riordan Bond Estate Agents Limited has not tested apparatus, equipment, fittings or services and so cannot verify they are in working order. The buyer is advised to obtain verification from their solicitor or surveyor.

O'Riordan Bond Weston Favell Sales
01604 784007

westonfavell@oriordanbond.co.uk

GROUND FLOOR

1ST FLOOR



TOTAL FLOOR AREA: 845sq.ft. (78.5 sq.m.) approx.

Whilst every attempt has been made to ensure the accuracy of the floorplan contained here, measurements of doors, windows, rooms and any other items are approximate and no responsibility is taken for any error, omission or mis-statement. This plan is for illustrative purposes only and should be used as such by any prospective purchaser. The services, systems and appliances shown have not been tested and no guarantee as to their operability or efficiency can be given.

Made with Metreapp ©2024

